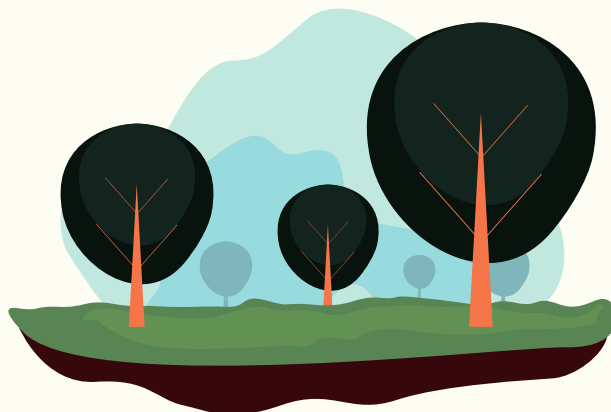


Name: \_\_\_\_\_

Date: \_\_\_\_\_

Most plants have the same plant parts.  
Use the clues to help unscramble the  
names of these plant parts.

1. I am like a straw. Water travels through me to reach the leaves \_\_\_\_\_ (semt)
2. We gather water and nutrients from the soil and we hold the plant in place \_\_\_\_\_ (rstoo)
3. I am usually green, and I use sunlight and water to make food for the plant \_\_\_\_\_ (fael)
4. I am often colourful and nice smelling. I am produce seeds \_\_\_\_\_ (lewfor)
5. I am grow into a new plant \_\_\_\_\_ (dese)



Answers: 1: stem 2: roots 3: leaf 4: flower 5: seed

Name: \_\_\_\_\_

Date: \_\_\_\_\_

**Science Fact:** Over thousand of years, rock has been broken up into small pieces but things that happen in the environment, this is called weathering. Rock becomes part of soil in this way.



Read the story below. For each pair of pictures, circle the picture that is **preventing erosion** from happening.

*Erosion is part of nature, but there are things we do that may speed up erosion or make erosion happen. When soil is moved by wind or water, it is referred to as erosion. When we speed up erosion, we lose valuable topsoil that we need to grow plants and crops. Plants and their roots help keep valuable soil in place. They help soil absorb water. When we remove plants to make room for new building, sometimes mudslides can heppen now that all the soil is loos and exposed.*

# PLANTS AND SOIL



**ReForest London**  
planting the future today

