

# INVESTIGATING TREES



**ReForest London**  
planting the future today

Name: \_\_\_\_\_

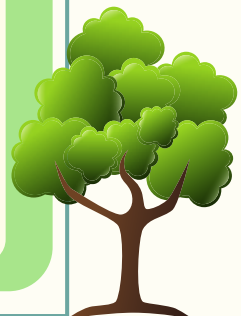
Date: \_\_\_\_\_

WHAT'S THE DIFFERENCE BETWEEN  
CONIFEROUS AND DECIDUOUS  
TREES?

What is a coniferous tree?

What is a deciduous tree?

Can you find 2 coniferous and 2 deciduous trees on your next walk? Draw the shapes of the leaves below





Technology has come along way and can help you identify trees.

Try using **TreeBee through Forest Ontario**. This site can help you learn more about the trees and forests. It does require cellular data.

You can also try **Seek**. Seek is a kid-friendly nature based app that uses the power of image recognition technology to identify the plants and animals around you. There is no registration required, and no user-data is collected. Your location is never stored, and once it's on your device it doesn't even need a data connection to work!



See if you can use one of the above sources to identify 3 species of trees on your next walk. Draw and tell us a little about the trees you find!

