

# WHERE DOES OUR WOOD COME FROM? PT. 2



**ReForest London**  
planting the future today

\*\* adapted from Forests Ontario "Weird Wood"

**Name:** \_\_\_\_\_

**Date:** \_\_\_\_\_

Think about the items in your home and where they may have come from. Can you identify which ones started their lives as trees?

How do you think these trees were made into the products you can find in your home? What sorts of processes are needed to turn a tree into something else?

Instructions:

Read about various trees and the processes and tree parts used to create common household materials. Use the clues to match the tree to the product on page 4.





# WHERE DOES OUR WOOD COME FROM? PT.2



**ReForest London**  
planting the future today

\*\* adapted from Forests Ontario "Weird Wood"

CORRUGATED  
CARDBOARD



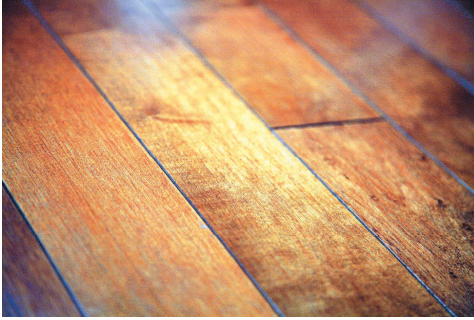
WHITE  
SPRUCE\*

HOCKEY STICK



ALPINE FIR

HARDWOOD  
FLOORING



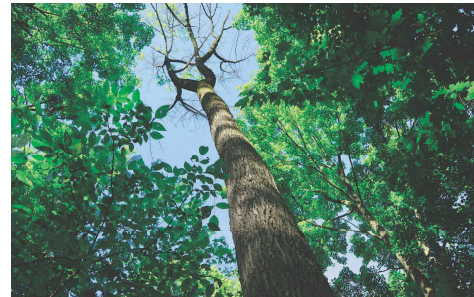
BLACK  
SPRUCE\*

ARTIFICIAL  
VANILLA



AMERICAN  
BEECH\*

NEWSPAPER



WHITE ASH\*

Answers: White Spruce - Artificial Vanilla, Alpine Fir Cardboard, Black Spruce - Newspaper, American Beech - Flooring, White Ash - Hockey Stick

\*Native tree