



Becoming a core volunteer with:

# ReForest London

Scan the QR code or visit  
**slido.com** and enter **code #RFL-101** to join this presentation.



**ReForest London**  
planting the future today



# Land Acknowledgement

We would like to begin by acknowledging the treaty territory of the Anishnaabeg, which is defined within the pre-confederation treaty known as The London Township Treaty of 1796. Throughout time, this region has also become the current home to the Haudenosaunee and Lenni-Lenape Nations.

- Chippewa of the Thames

# Our Agenda

**Part 1:**  
**About ReForest London**

**Part 2:**  
**London's Urban Forest**

**Part 3:**  
**Becoming a Core Volunteer**



Part 1

# About ReForest London





**Founded by citizens in  
2005 as a part of the  
Urban League of London**



**18 unique volunteer  
groups, 295 first-time  
volunteers and 866 total  
volunteers in 2020**



**In 2020 we planted  
over 5,000 trees and  
shrubs across London**

**About ReForest London**





# Our Mission

ReForest London is a **non-profit** organization dedicated to partnering with our **community** to enhance environmental and human health in the Forest City, through the benefits of **trees**.

**Vision:** Londoners thriving in a healthy urban forest

- Empowerment
- Ecosystem Health
- Education



About ReForest London



# Our Team

ReForest London has a small team of staff who run all of our day-to-day activities. From event planning to paperwork, our staff are the ones who make it happen.

As a charity, we are lead by our Board of Directors who help to keep ReForest working towards our mission.





# Westminster Ponds Centre

- Hub for **environmental** and nature based programming
- Honors its natural, built and cultural **heritage**
- 14 acres, 4 buildings, 2 ball diamonds
- London's only **Environmental Centre**
- Catalyst for environmental change







## Bruce Pavilion

Home to:

- ReForest London
- Thames Talbot Land Trust
- London Environmental Network





**Huron Pavilion**

- Thames Valley District School Board (Environmental Education / Outdoor Education Programs)



**Wellington Building**

- Future environmental projects to come!



**Perth Pavilion**

- Proposed site of Urban Healing Lodge with focus on:
- Indigenous health and well-being
- Community supports and traditional healing



## Our Core Programs:

- Million Tree Challenge
- Park Naturalizations
- Outreach events (seedling giveaways)
- Tree Cycle
- Celebration Forest
- Neighbourhood Tree Giveaway



### About ReForest London



# 475,311

**trees and counting.....**

London's Million Tree Challenge is a community-wide initiative to inspire Londoners to plant one million new trees across the city! Londoners are invited to register all the trees they have **planted since January 2011** and see the big tree counter tick toward one million. Any tree, planted anywhere, by anyone counts!

**About ReForest London**





## Our Lead Sponsor:

**Canada Life has been the lead sponsor of ReForest London since 2009. In addition to their financial support, this corporate leader has also planted trees on their own land and encourages their employees to volunteer to plant trees in the community.**

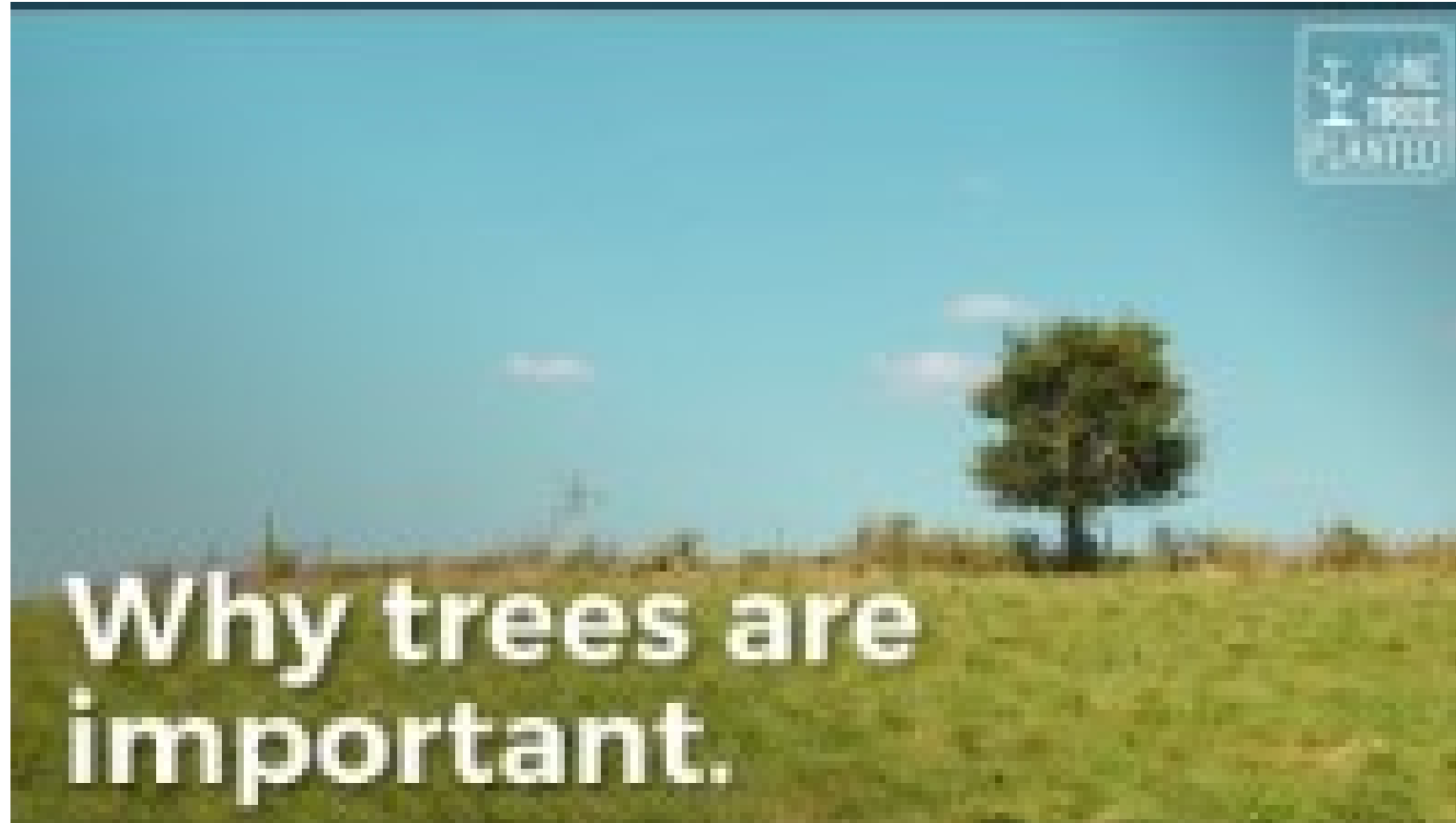


# Part 2

# London's Urban Forest



# The Benefits of Trees



There are many benefits that trees provide to your home, neighbourhood and community. Planting trees can impact the value, costs and safety of where you live. Trees are an asset, and their value increases over time!

Make sure to plant trees in your yard and in your neighbourhood to build a more vibrant and healthy environment!

### Safety

Well-treed streets encourage pedestrian and bicycle traffic and improve a sense of safety. Tree-lined streets slow traffic. Children are also more likely to walk to school on well-treed streets.

Study after study shows that well-treed communities are safer and healthier. Using data from Toronto, a team of researchers has found that having 10 more trees on your block has self-reported health benefits akin to a **\$10,000 salary raise** or moving to a neighbourhood with a \$10,000 higher median income or being **seven years younger**. – The Star, 2015

### Community

Planting trees is a great way to empower and instill community involvement within a neighbourhood. Trees bring diverse groups of people together and provide a space for retreat.

### Value

A well-treed lot can increase your property value by as much as 20% and help to beautify your neighbourhood streetscape. Once you start digging, you'll find your neighbours will too!

### Health

Shade from trees cools your yard, making it more pleasant to eat, play, work, and relax outside. Skin cancer is one of the most common forms of cancer, and trees protect our skin while we are outside by reducing UV exposure.

### Environment

Trees store carbon dioxide and release oxygen back into the air. They remove dust and particulates, and they absorb ozone, carbon monoxide, sulfur dioxide and other pollutants from our air. Trees clean water by filtering runoff and sediment from slopes next to streams, and they recharge groundwater.

Planting trees can restore critically needed habitat. Trees provide excellent urban homes for birds, bees and other wildlife. Trees can attract a diversity of wildlife with the food, cover and nest sites that they supply.

### Cost

Deciduous trees planted on the south and west side of a home can decrease your cooling costs by up to 50%. Evergreen trees that are planted as wind breakers around homes can decrease your heating costs by as much as 30%



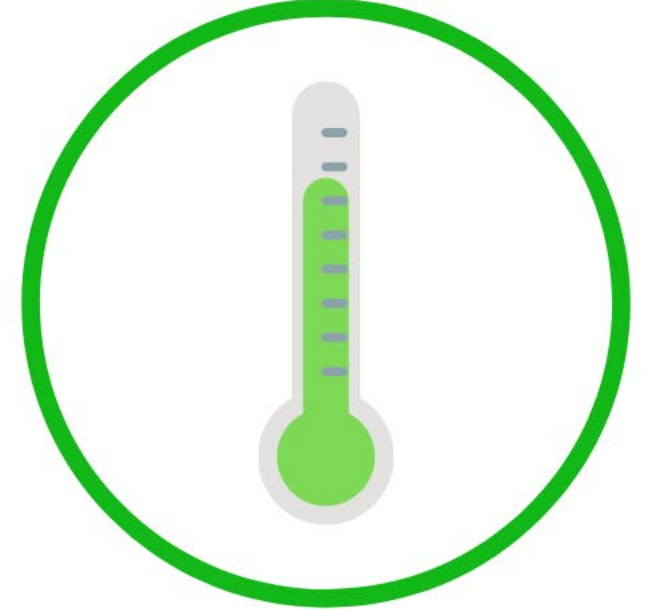
# The Carolinian Forest



**220 species of plants  
and 70 tree species**



**1% of Canada but  
25% of population**



**Warmest average  
annual temperatures**

# London's Carolinian Forest

Municipal goals to increase tree canopy cover in London from 23% currently. to a target of 34% by 2065

Includes:

- Street tree
- Residential trees
- Park trees
- Greenbelts
- Ravines



**Old North**  
Neighbourhood  
**39%** canopy cover



**Sunningdale**  
Neighbourhood  
**5%** canopy cover



# How To Plant A Tree:

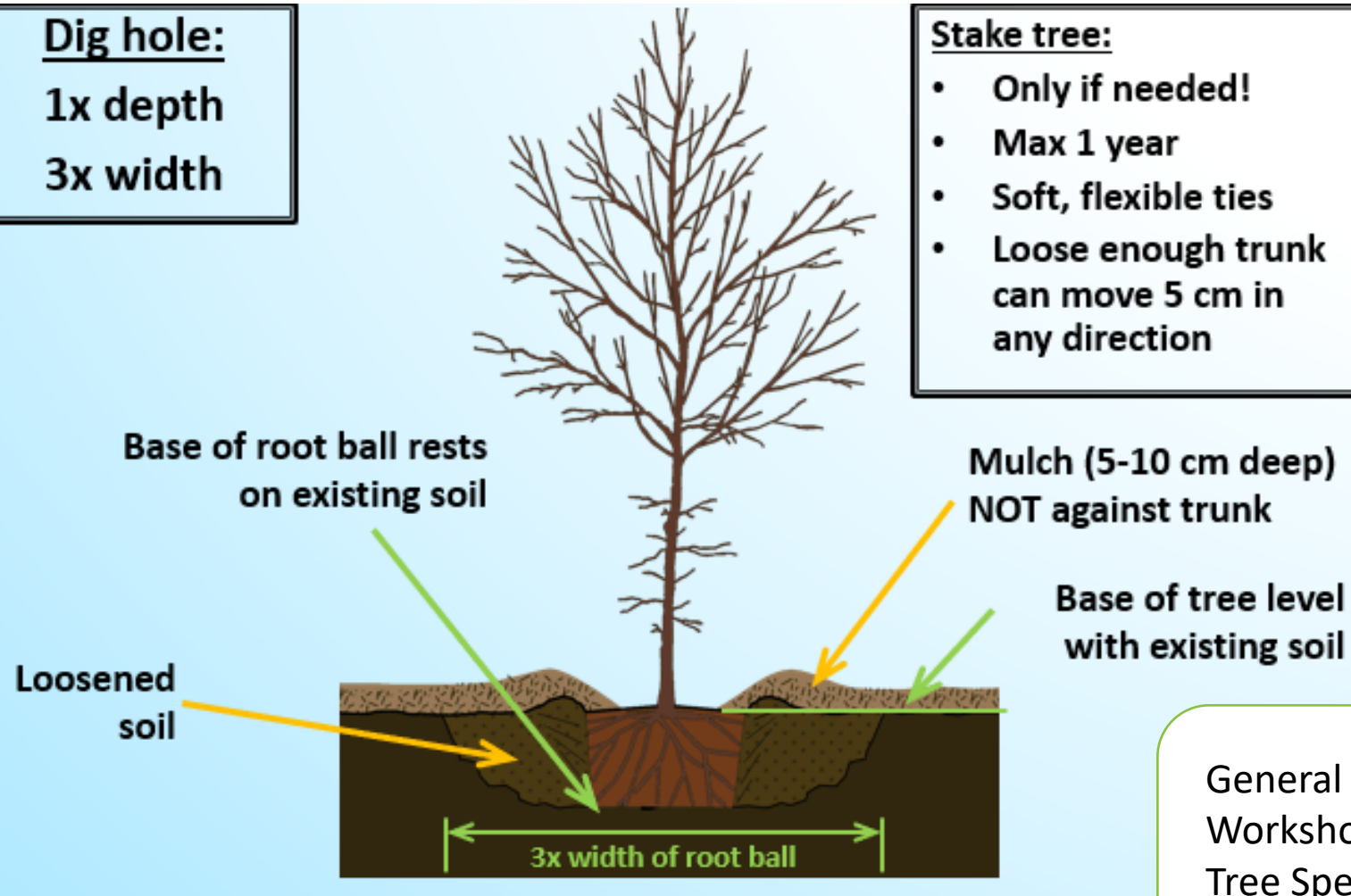
## Dig hole:

1x depth

3x width

## Stake tree:

- Only if needed!
- Max 1 year
- Soft, flexible ties
- Loose enough trunk can move 5 cm in any direction



General Tree Care  
Workshop **Aug 16**  
Tree Specialist Training  
**Aug 10, Sept 1, Sept 15**

## Native Species

- Species that naturally occur within our ecosystem
- Suited to local environment and conditions
- Connected with other native species in the ecosystem

## Non-Native Species

- Introduced into our ecosystem from elsewhere
- Not likely to become a threat to native species
- Safe for landscaping but unacceptable for naturalization projects

## Invasive Species

- A threat to native species and disrupts local ecosystems
- Has no “enemies” to maintain species levels
- Should be removed when possible







## Sugar Maple *Acer saccharum*

- Large tree, can grow up to 35 m
- Can live for more for over 200 years
- Spectacular fall foliage
- 40L of sap produces 1L of maple syrup
- Represented on the Canadian flag







## Japanese Maple *Acer palmatum*

- Relative of North American maples
- Native to Japan, China, Mongolia and eastern Russia
- Small tree, used in landscaping
- No threat to native trees
- Many cultivars: green, red, or variegated leaves, weeping or upright form







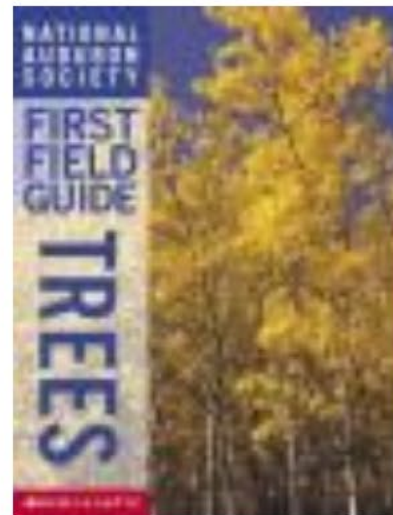
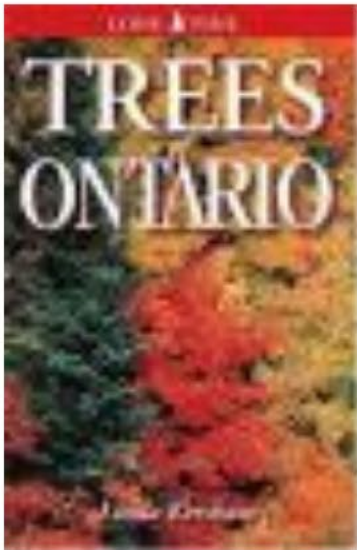
## European Buckthorn *Rhamnus cathartica*

- Introduced to North America to use as hedgerows.
- Forms dense thickets that crowds out and shades out native plants
- Spreads vigorously by seed, fruit acts as a laxative to birds
- Sub-opposite leaf arrangement



Learn more about Tree Identification through **Tree Specialist Training!**

Check out some great resources from the London Library



**vTree** 4+  
[John Peterson](#)  
Designed for iPhone  
★★★★☆ 3.2 • 37 Ratings  
Free



**LeafSnap-Plant Identification**  
Enjoy identifying plants  
[Doan Thang](#)  
Designed for iPad  
#140 in Education  
★★★★☆ 4.0 • 145 Ratings  
Free · Offers In-App Purchases



# Part 3

# Becoming a Core Volunteer



# Pop-Up Volunteer Opportunities



**Becoming a Core Volunteer**





# Park Naturalization



## THE ROLE

- You will help us plant trees in local parks and other public land
- You will help create new naturalization areas to improve the biodiversity and attract wildlife.
- Includes plantings and aftercare

## SKILLSETS

You will love this role if:

- You like being outside
- You want to bring family with you
- You like engaging with nature and the community

## REQUIREMENTS

These are our entry level opportunities that anyone can attend

- No extra training
- No experience required
- All ages welcome

**Becoming a Core Volunteer**

# Core Volunteer Opportunities

- **Tree Specialists**
- **Community Liaison**
- **Office Assistant**
- **Future Opportunities**







# Tree Specialist



## THE ROLE

---

- Learn to become knowledgeable tree planters
- Assisting first-time tree planters at naturalization event
- Help at Neighbourhood Tree Giveaways and school events

## SKILLSETS

---

You will love this role if:

- You have a passion or experience with trees
- You enjoy teaching others
- You like to help people

## REQUIREMENTS

---

- This orientation session
- 2 hour "classroom" session
- 2 hour Tree Identification hike
- Online quiz
- Attend one event as a Tree Specialist in Training

**Becoming a Core Volunteer**



# Community Liaison



## THE ROLE

- Staffing a display booth, speaking with the public and encouraging their participation
- Give away seedlings & promote MTC registrations
- Sell promotional items (i.e. Tree Gifts, t-shirts)

## SKILLSETS

You will love this role if:

- You enjoy talking to people
- You are passionate about ReForest London's Mission
- You like visiting all kinds of events in London!

## REQUIREMENTS

- This training session
- 1 hour "classroom" session

**Becoming a Core Volunteer**





# Office Volunteer



## THE ROLE

- You will help with all things around the office
- Data entry
- Emailing volunteers
- Managing subscriptions
- Organizing cabinet space
- Updating website content

## SKILLSETS

You will love this role if:

- You are looking to volunteer during the weekday
- You enjoy hanging out with the ReForest Team
- You are detail oriented

## REQUIREMENTS

Taking this training is the only requirement. If you are interested in becoming an office volunteer please send me an email.

**Becoming a Core Volunteer**



# Committee Member



## THE ROLE

- Promoting a vision of a well-treed community to London and beyond
- Developing campaigns to promote activities
- Supports our website and annual report
- Creating new ways to engage the community with ReForest London

## SKILLSETS

You will love this role if:

- You enjoy working in a team
- You want to become a Board Member at ReForest London
- Passionate about the environment and bringing the community together

## REQUIREMENTS

- This Training session
- Submitting an application for the committee

**Becoming a Core Volunteer**



# Future Volunteer Opportunities

- Tree Teacher
- Storyteller
- Hike Leader
- Translator or Interpreter
- Tree Mascot
- Transportation Specialist
- Photographer
- Graphic Designer
- GIS and Mapping



Becoming a Core Volunteer

# Next Steps:



**Fill out our Survey and  
sign-up for events**



**Additional Training  
will be starting soon**



**Reach out and  
connect with us!**

**Becoming a Core Volunteer**





# Thank-You!

Questions?